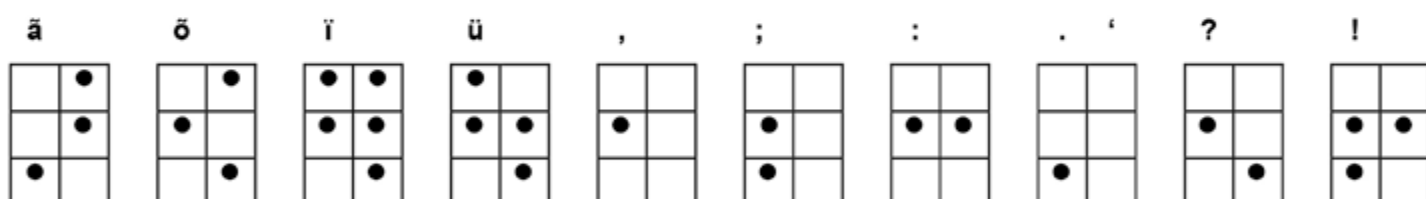
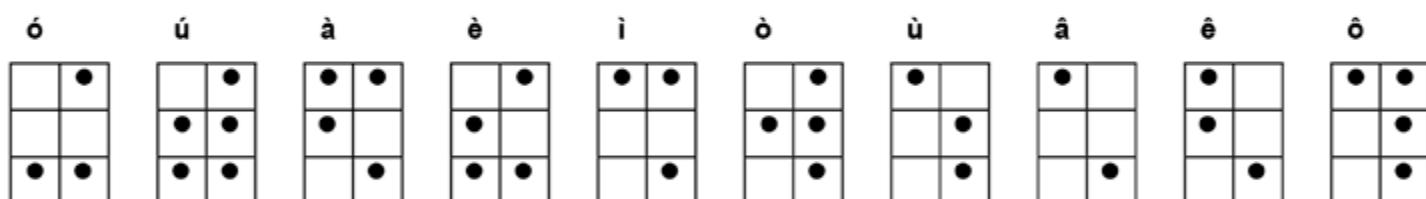
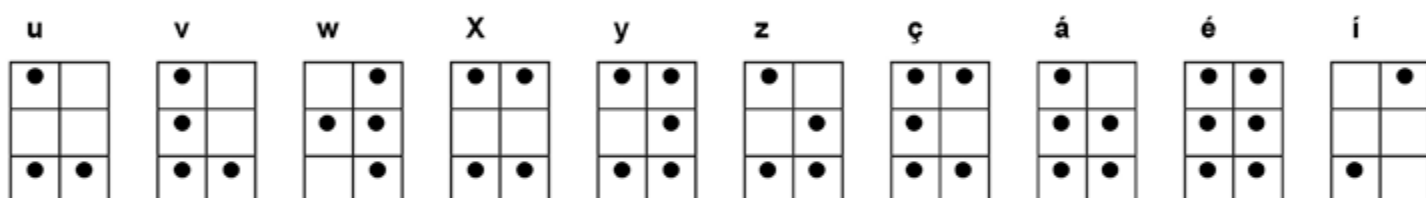
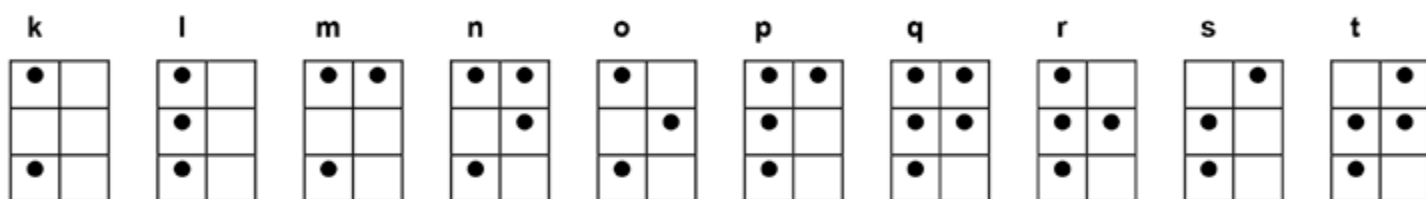
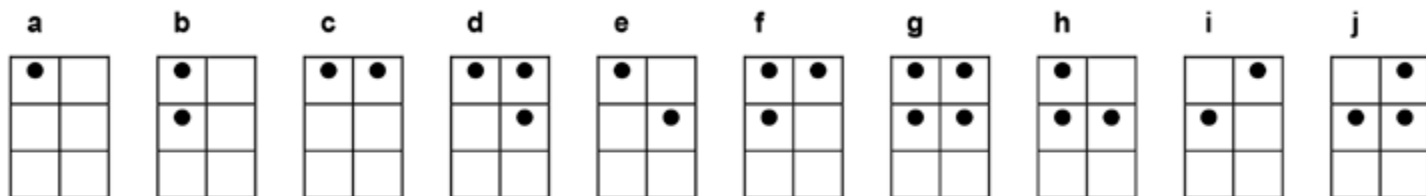
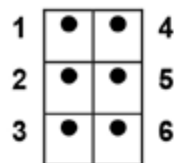


# ALFABETO BRAILLE, PONTUAÇÃO E OUTROS SINAIS



vírgula

ponto e  
vírgula

dois pontos

ponto /  
apóstrofo

...

-

—

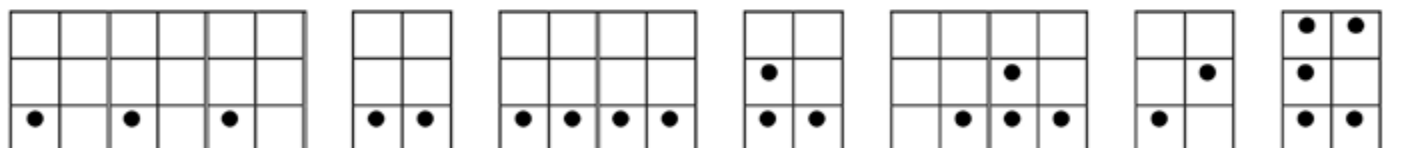
“

«

»

\*

&



reticências

hífen

travessão

abre/fecha  
vírgulas altas

abre/fecha  
aspas

asterisco /  
itálico

/

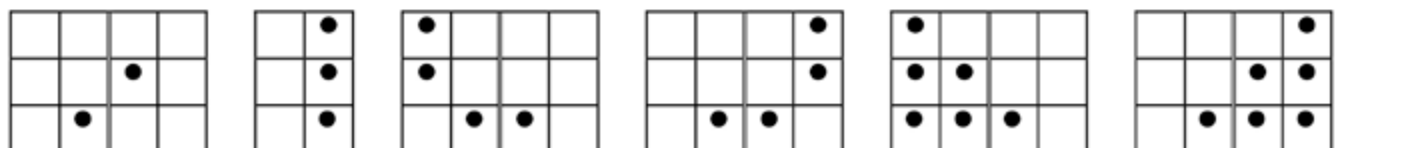
|

(

)

[

]



barra  
oblíqua

barra  
vertical

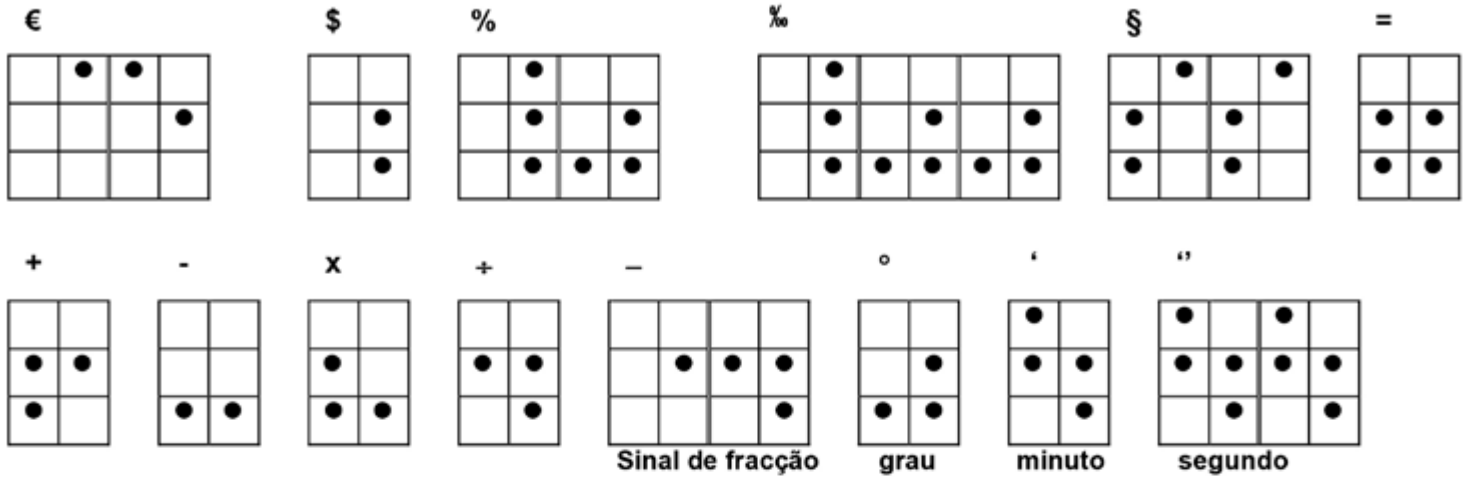
abre parêntesis  
curvo

fecha parêntesis  
curvo

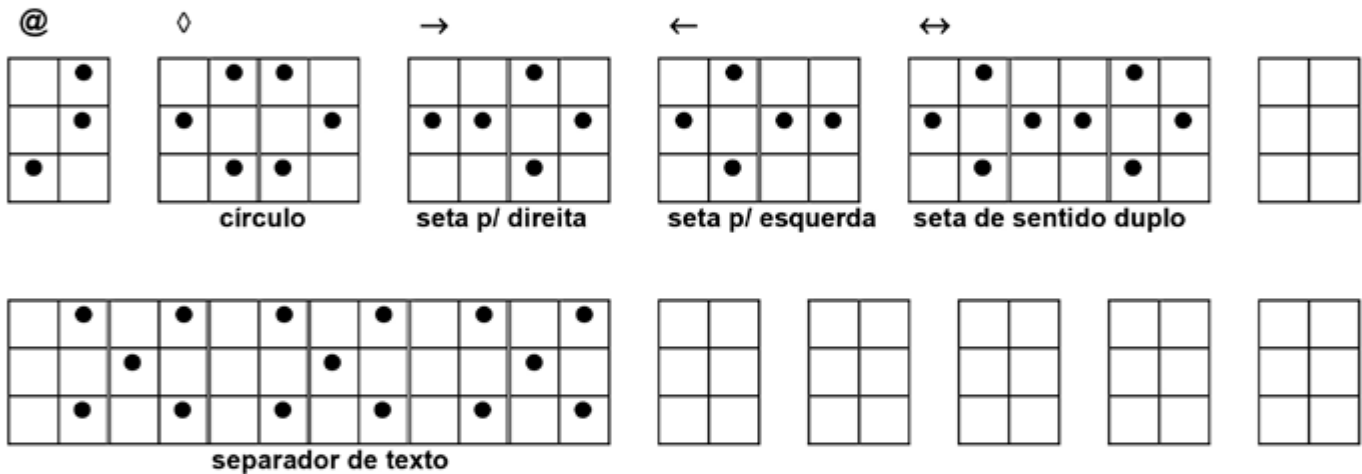
abre parêntesis  
recto

fecha parêntesis  
recto

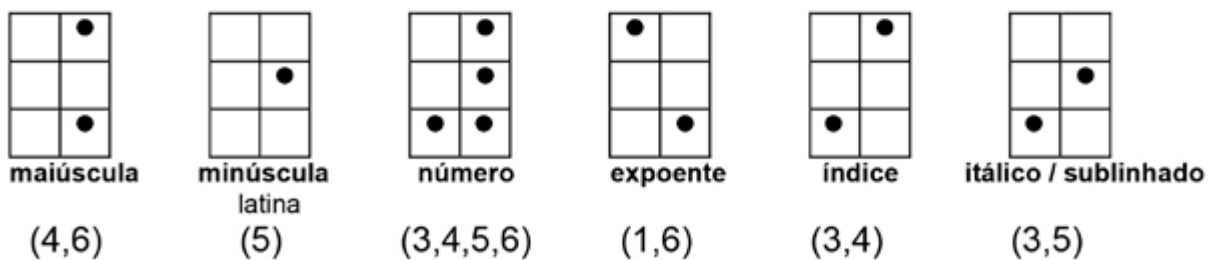
## SINAIS USADOS COM NÚMEROS



## OUTROS SINAIS ACESSÓRIOS



## SINAIS EXCLUSIVOS DA ESCRITA BRAILLE



**M**

**A**

**F**

**B**

**G**

**C**

**H**

**D**

**M**

**I**

**N**

**J**

**O**

**L**

**P**

**K**

**Q**

**U**

**R**

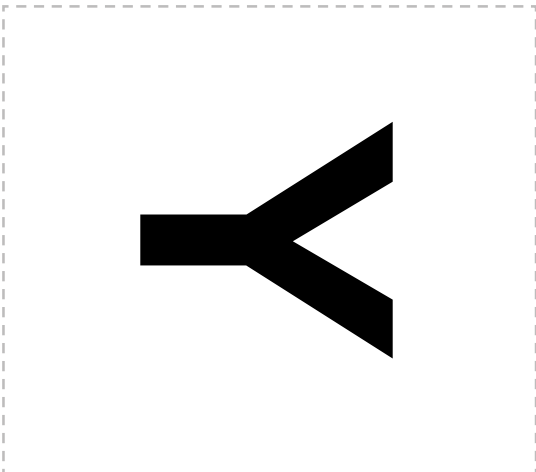
**V**

**S**

**X**

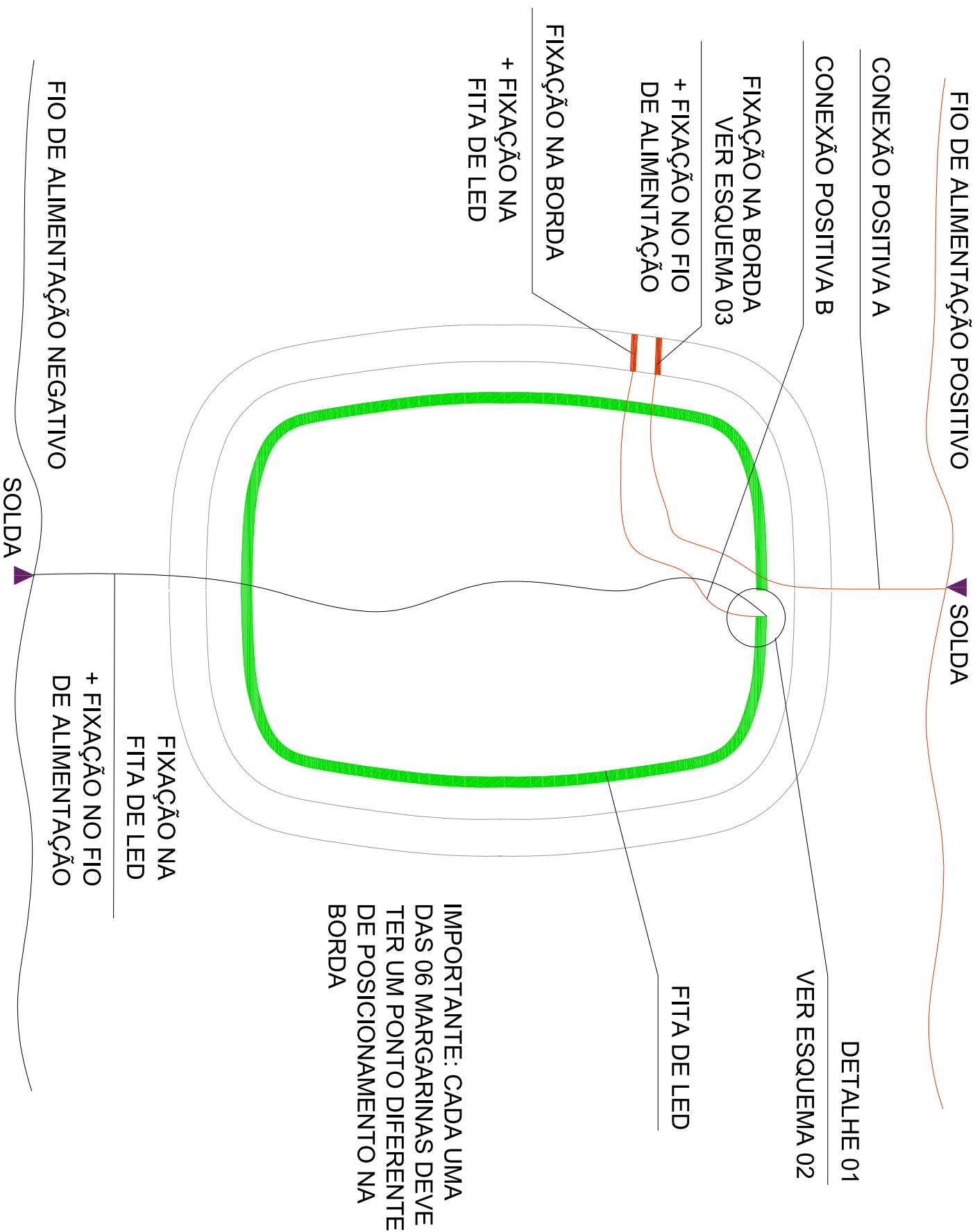
**T**

**Z**



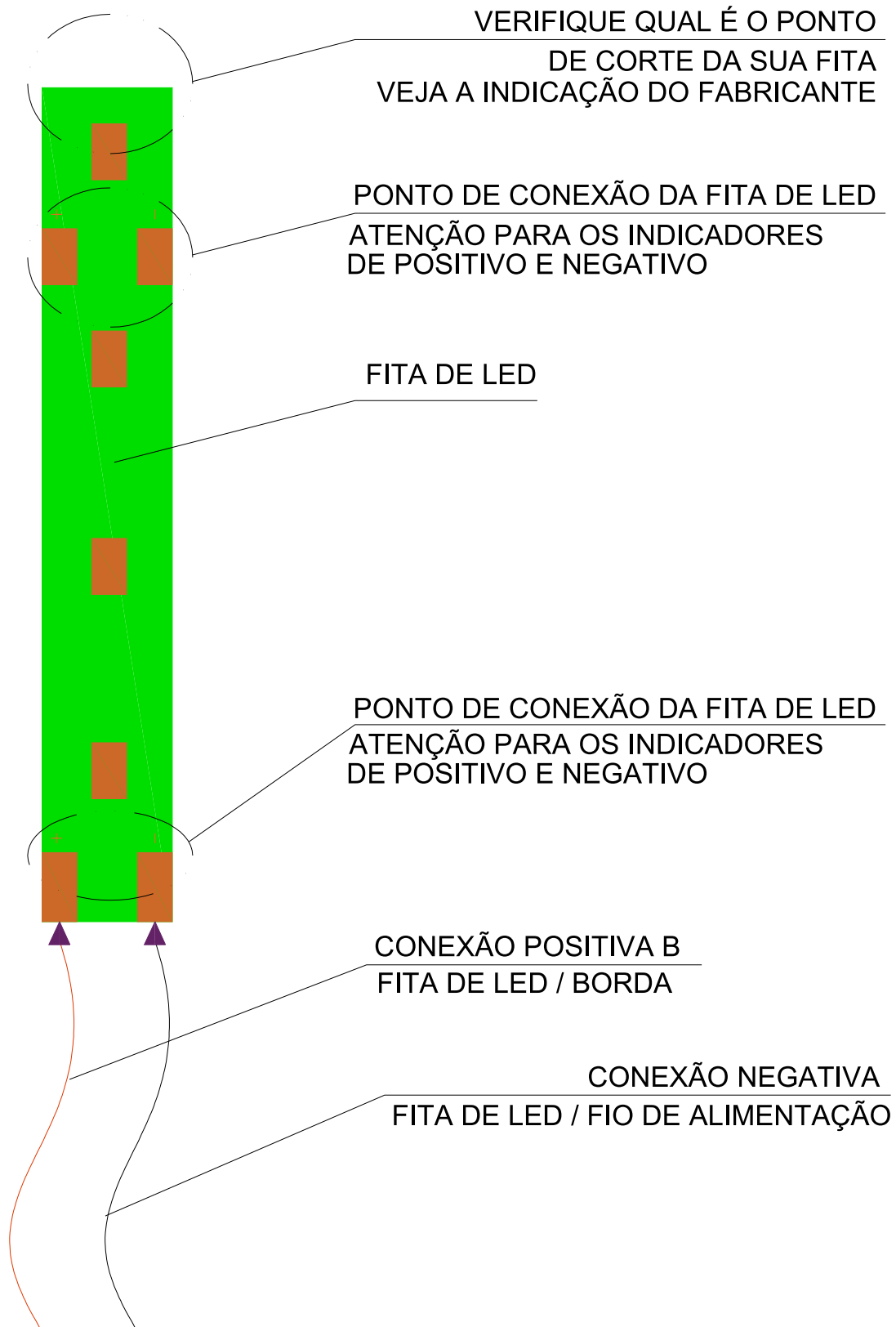
# PAINEL INTERATIVO - ESQUEMA 01

## CIRCUITO



# PAINEL INTERATIVO - ESQUEMA 02

## DETALHE DA CONEXÃO - FITA DE LED

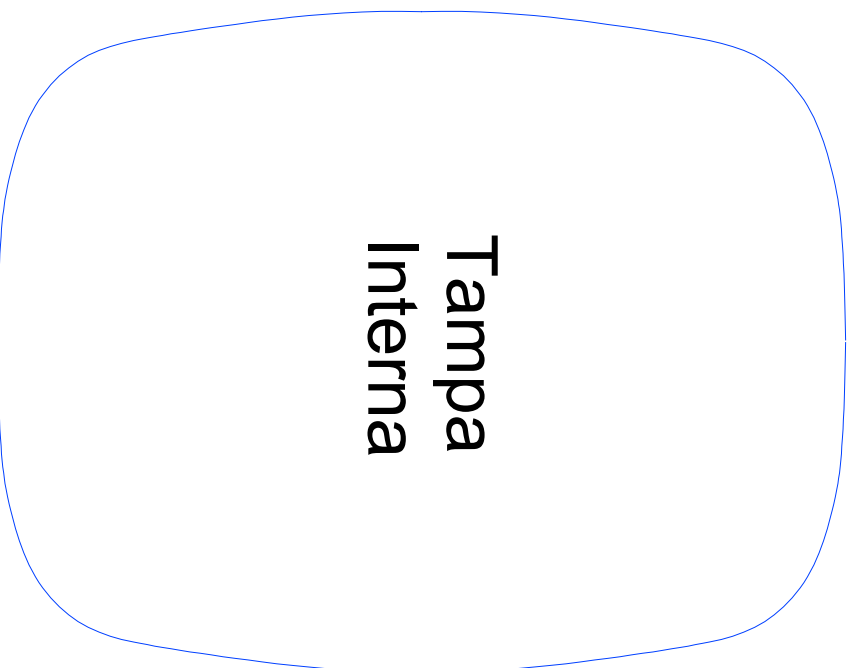




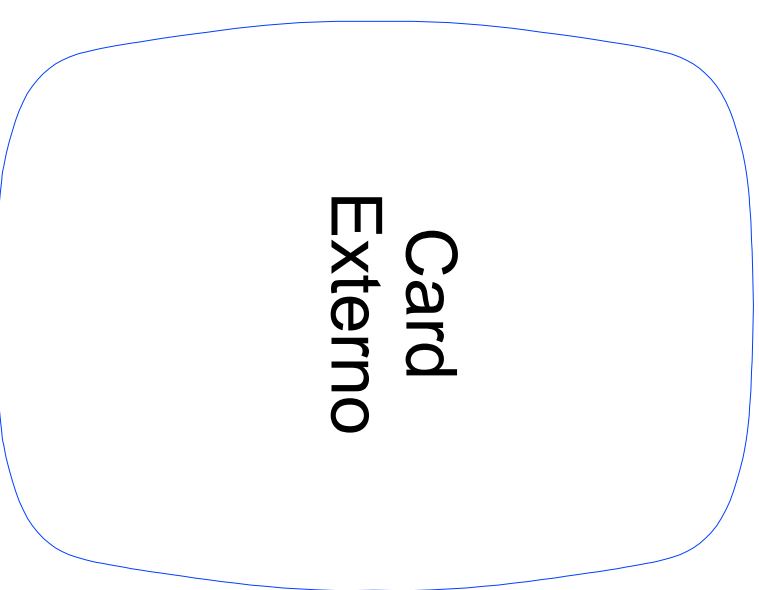
# PAINEL INTERATIVO - MOLDE 1

## TAMPAS E CARDS

**Molde 1 A**



**Molde 1 B**

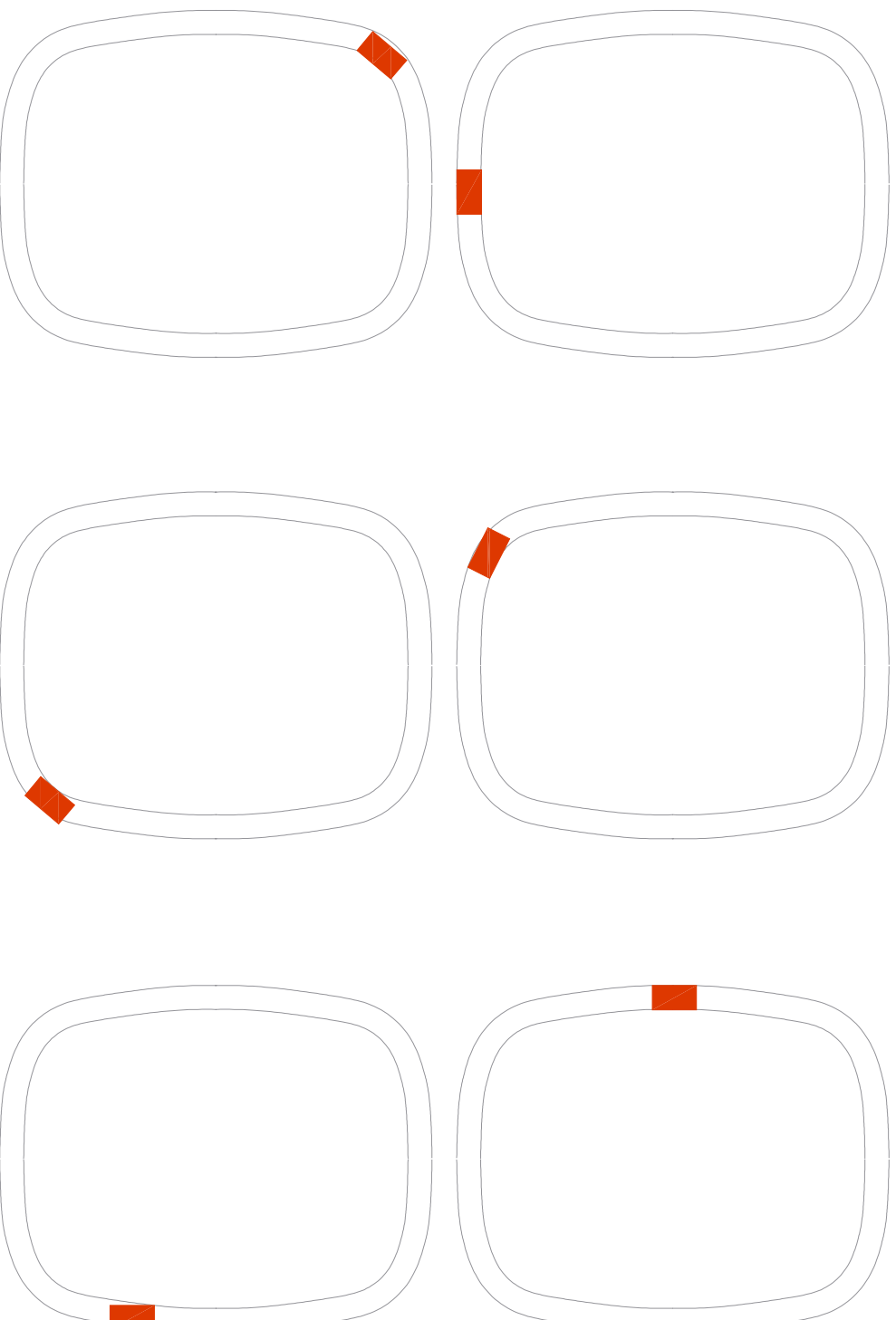


cortar

# PAINEL INTERATIVO - ESQUEMA 03

## EXEMPLO DE POSICIONAMENTO DAS CONEXÕES POSITIVAS NA BORDA DAS MARGARINAS

REGIÃO PARA FIXAÇÃO



IMPORTANTE: AS POSIÇÕES NÃO PRECISAM SER EXATAMENTE AS INDICADAS NESTE ESQUEMA, O QUE É IMPORTANTE É QUE ESTEJAM EM REGIÕES DIFERENTES EM CADA MARGARINA.

IMPORTANTE 02: AS TAMPAS (CARDS) DEVERÃO RECEBER O PEDAÇO DE ESPONJA DE AÇODE FORMA ALINHADA AS POSIÇÕES ESCOLHIDAS NAS BORDAS. É O ENCONTRO ENTRE A ESPONJA DE AÇO E AS CONEXÕES DAS BORDAS QUE FAZ COM QUE O LED ACENDA.

# PAINEL INTERATIVO - MOLDE 2

## CORPO DE PROTEÇÃO



cortar

dobrar

cortar e colar

marcar posição

# PAINEL INTERATIVO - MOLDE 2

## CORPO DE PROTEÇÃO

MOLDE 2-A

MOLDE 2-B

# PAINEL INTERATIVO - MOLDE 2

## CORPO DE PROTEÇÃO

MOLDE 2-B

MOLDE 2-C

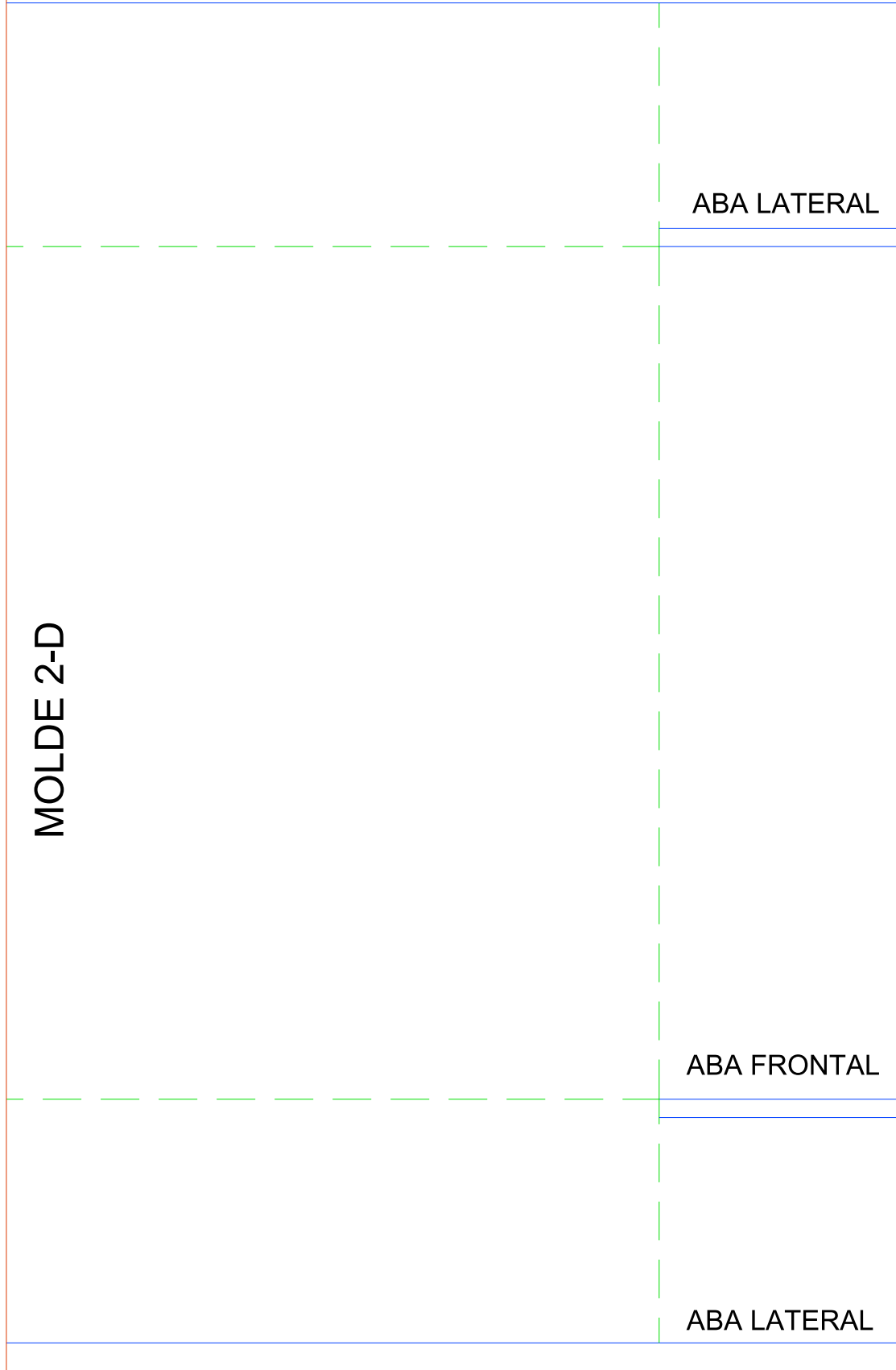
# PAINEL INTERATIVO - MOLDE 2

## CORPO DE PROTEÇÃO

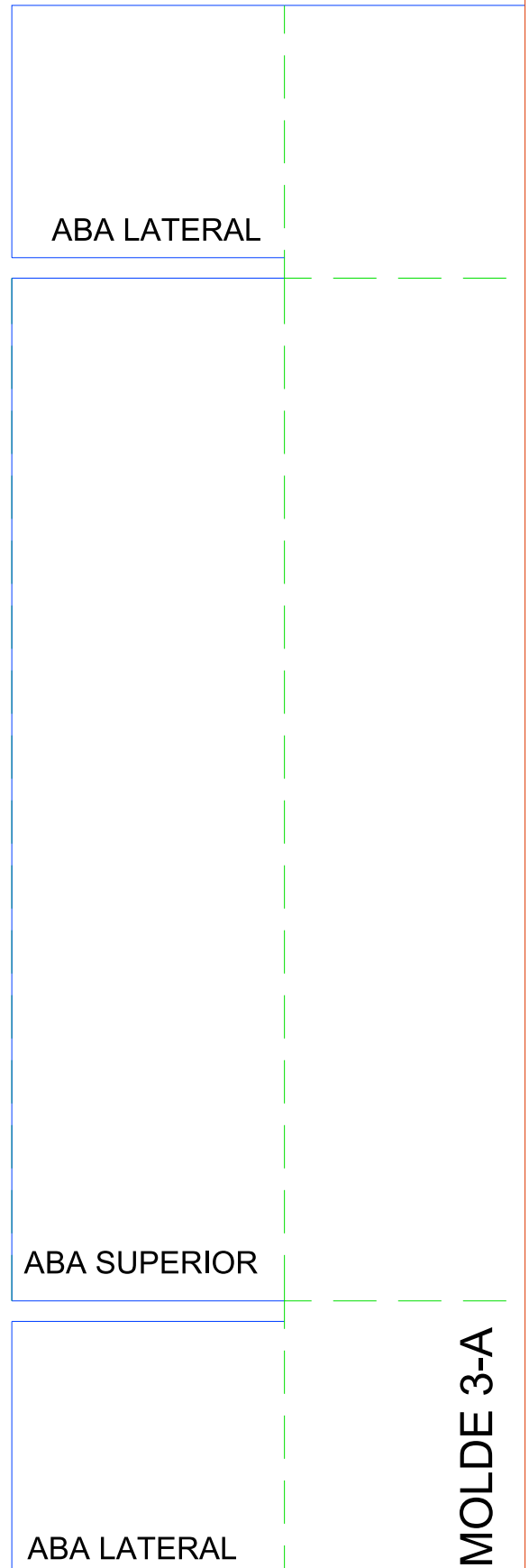
MOLDE 2-C

MOLDE 2-D

# PAINEL INTERATIVO - MOLDE 2 CORPO DE PROTEÇÃO



# PAINEL INTERATIVO - MOLDE 3 TAMPA DE PROTEÇÃO



cortar

dobrar

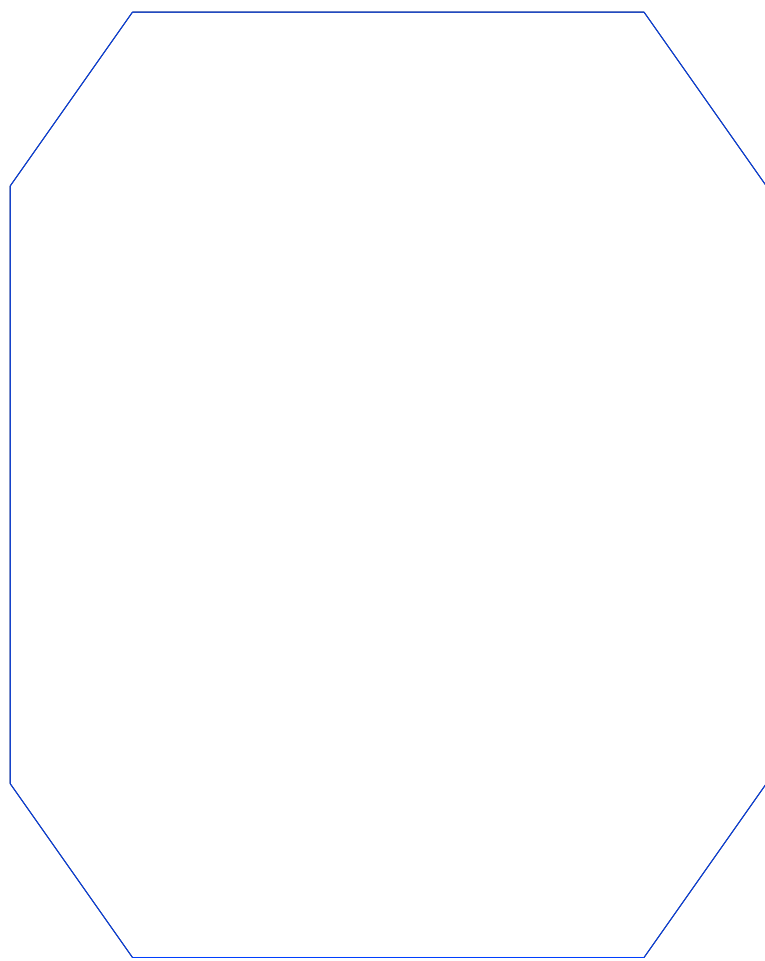
cortar e colar

marcar posição



# PAINEL INTERATIVO - MOLDE 3

## TAMPA DE PROTEÇÃO

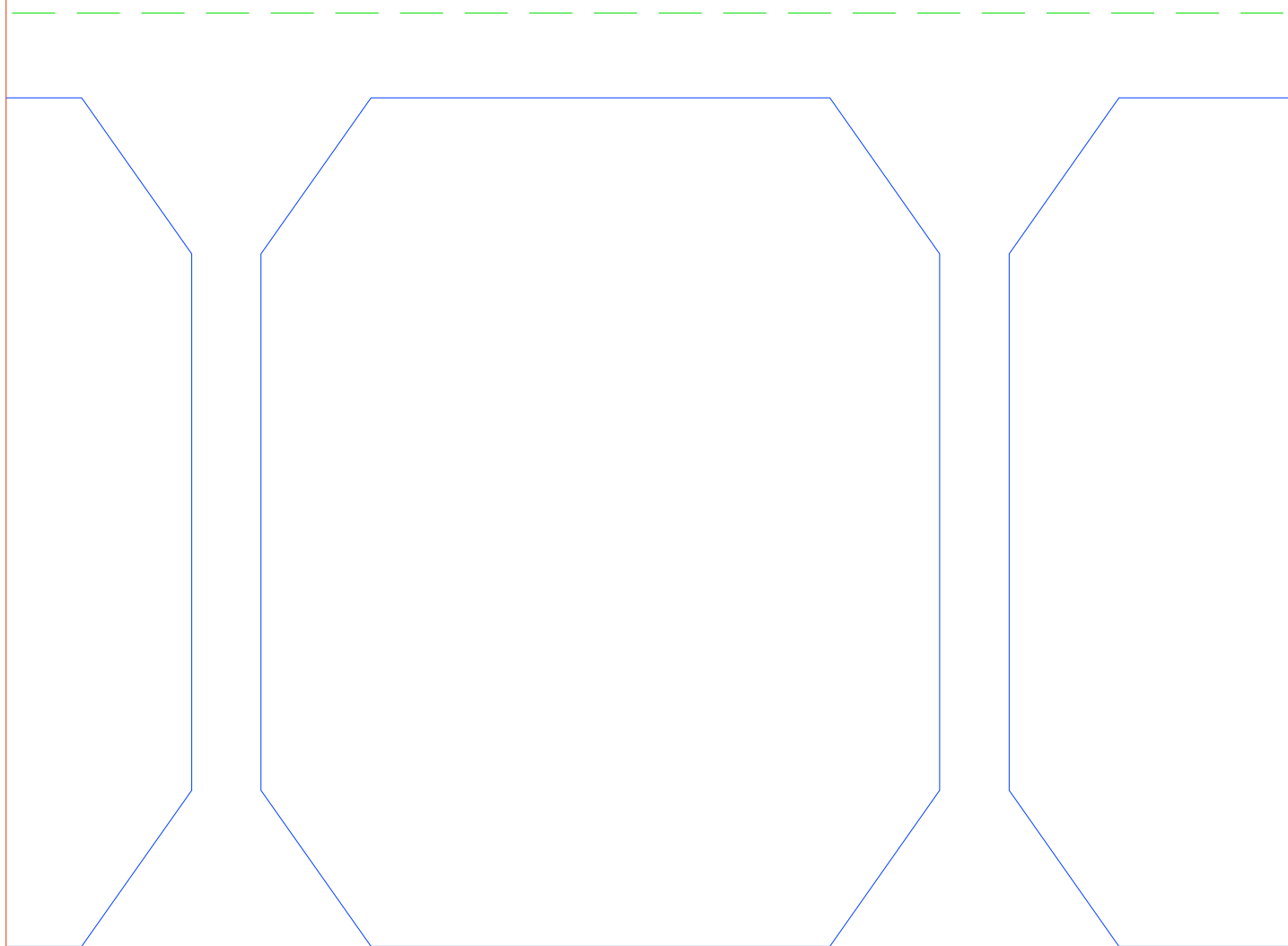


MOLDE 3-A

MOLDE 3-B

# PAINEL INTERATIVO - MOLDE 3

## TAMPA DE PROTEÇÃO

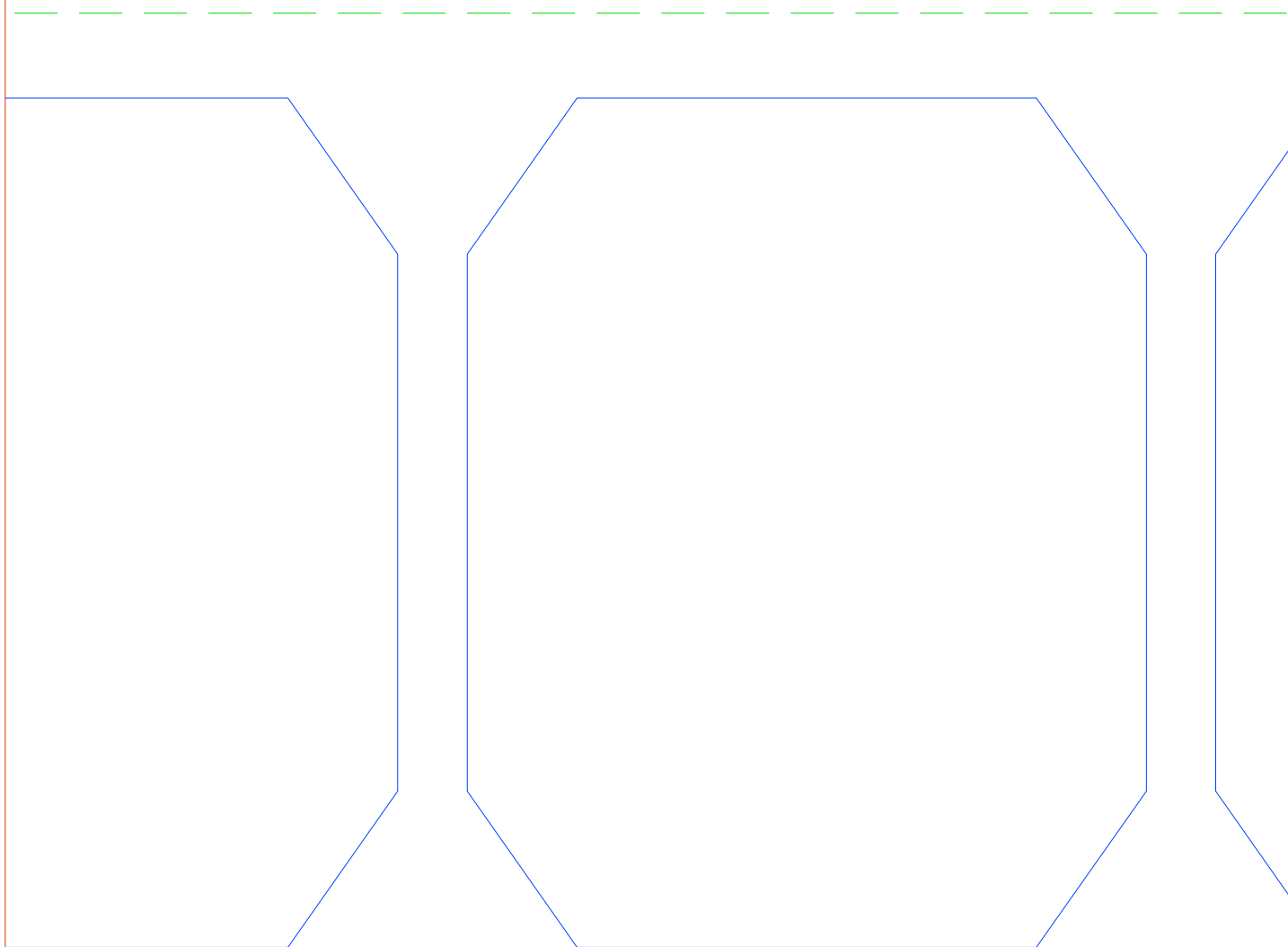


MOLDE 3-B

MOLDE 3-C

# PAINEL INTERATIVO - MOLDE 3

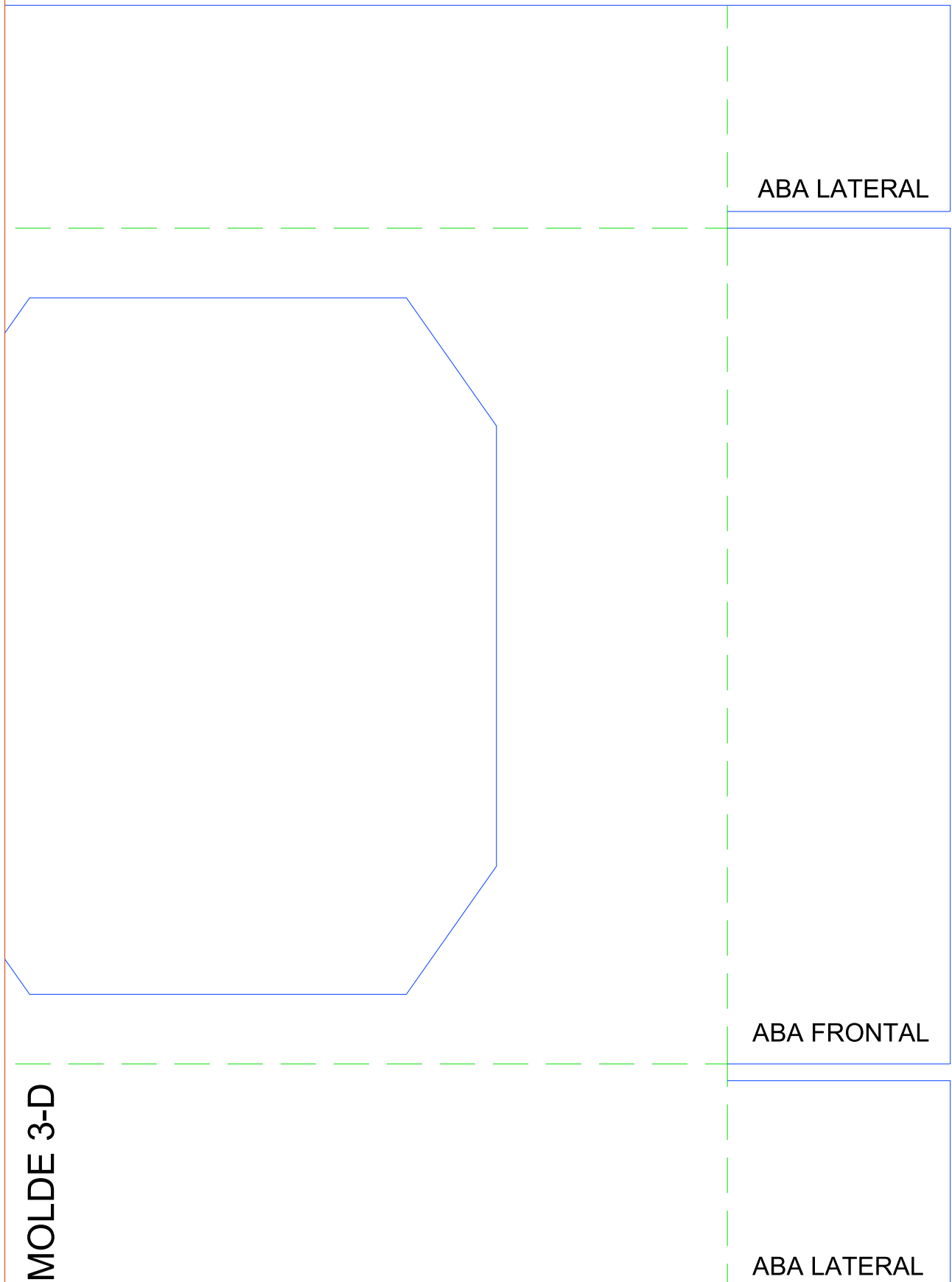
## TAMPA DE PROTEÇÃO



MOLDE 3-C

MOLDE 3-D

# PAINEL INTERATIVO - MOLDE 3 TAMPA DE PROTEÇÃO



ABA LATERAL

ABA FRONTAL

MOLDE 3-D

ABA LATERAL